

DesignaKnit8

Computer aided
knitwear design

CHOOSE YOUR PACKAGE...

HandKnit



A complete design and charting system for the hand knitter, including an extensive collection of stitch cables. Select from 200 new hand knitting stitch symbols with abbreviations and knitting instructions. Use as they are or alter to suit your needs.

Machine Standard



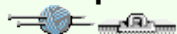
The basics for machine knitters with a set of standard garment shapes and great stitch pattern design features. Full support for colour changers. Optional cable connections are available for almost any machine.

Machine Pro



More features for the domestic machine knitter - the features of Machine Standard plus the freedom of Original Pattern Drafting.

Complete



Everything in one program for the hand & machine knitter or designer who wants it all. The industry choice.



Standard Garment Styling

- A versatile pattern drafting tool to create a range of tops and skirts.

Body Measurements

Derived from: standard / bust 07 (34")

Body Measurement	Ease	Dimension affected
Chest 07.0	14.0	Body width at armpit 60.6
Waist or hip 02.0	3.0	Body width at row 1 S/S 50.5
Shoulder to shoulder 34.0	1.0	
Nape to garment length 60.5	0.0	Entire garment length 60.5
Arm length 55.0	0.0	
Arm hole depth 21.0	2.5	
Upper arm 28.0	14.0	
Wrist 16.0	6.0	

Recommended ease
14.0

Casual

Copy Paste

OK Cancel Help

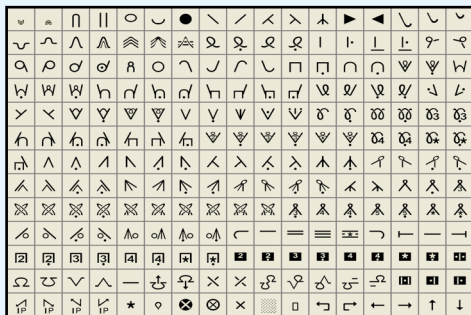
Use a standard size for men, women, children, or babies, or edit body measurements & ease for a perfect fit. Keep database of personal data.



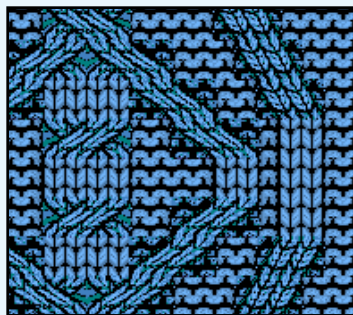
Adjust styling features.

Stitch Designer

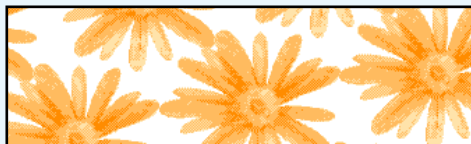
Design multi-coloured and textured stitch patterns, and integrate with garment shapes. Trace directly onto the screen using a graphics tablet, and draw text with any TrueType font.



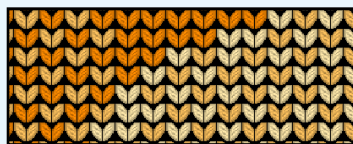
The new font of hand and machine knit symbols.



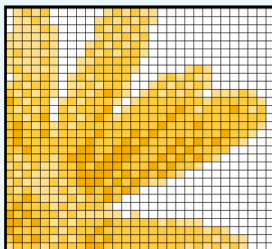
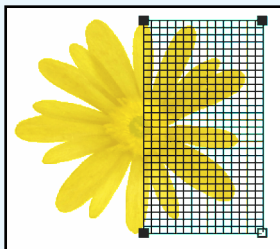
Design with the new Cables Tool.



Adjust patterns made with Graphics Studio - or draw from scratch, for a variety of knit methods.



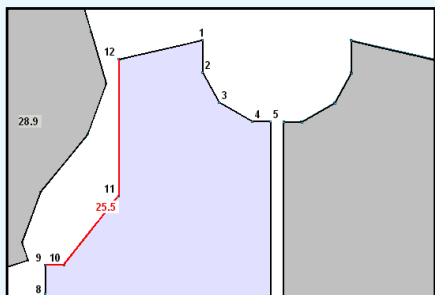
Graphics Studio



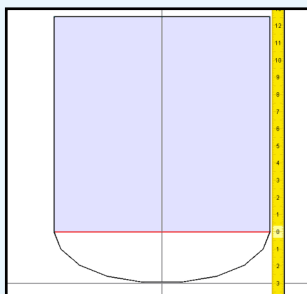
Take images from internet, camera, graphics programs, or scanner, and convert to stitch patterns. Control exactly how image colours are converted to yarn colours. Pick colours from the image or from your yarns. Choose how many stitches & rows, and the number of colours per row to convert to. Use bird's eye patterns to create extra in-between colour shades.

Original Pattern Drafting*

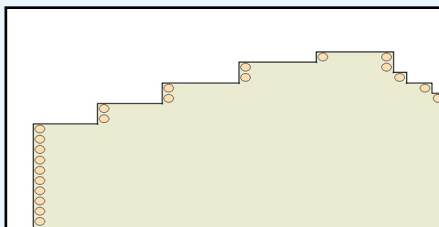
(*Included in HandKnit, Machine Pro, and Complete editions)



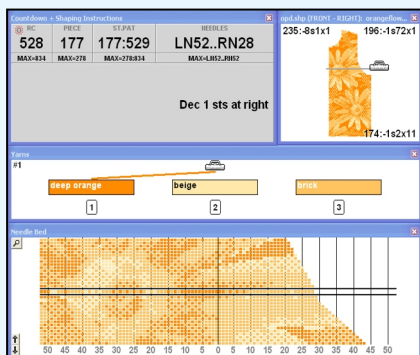
Alter a standard garment, experimenting with layout and orientation, cutting or joining pieces...



...or start from a square block. Measure around edges or in a straight line.

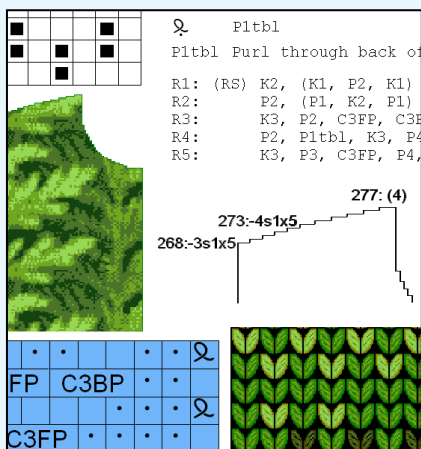


Take full control over edge shaping with the new Exact Stitch Layout



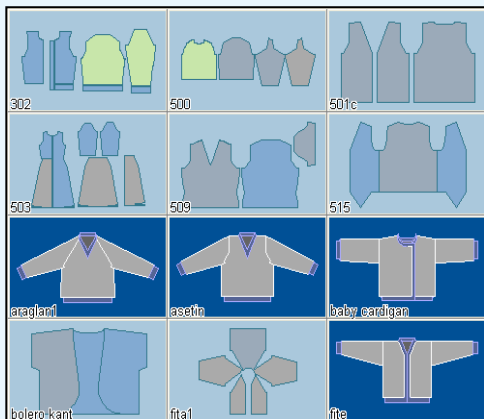
Interactive Knitting

Receive row by row colour change or shaping instructions while you knit by machine or hand.
Synchronize almost any knitting machine to your PC using a DesignaKnit cable link.



Printouts

Choose from a wide range of printout formats



Keep on top of your files with the thumbnail viewer. Visually browse your shapes, stitch patterns, palettes, and graphic files.

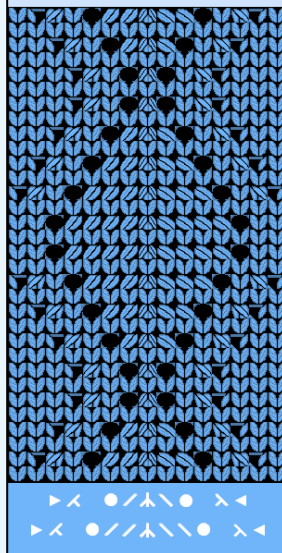
Comprehensive search and sort options help you find what you are looking for.

Use up to date Windows functionality including long filenames, network, and mousewheel support. Compatible with 32- and 64-bit Windows.

Keeps up to date easily - DesignaKnit can update itself from the web.

Edit shapes and stitch patterns freely with 20 levels of undo and redo.

Machine lace



Design machine lace for Silver Reed, Toyota, and Brother using the optional Lace Tool. While knitting, receive instructions when to change carriage or carriage settings.

System requirements

Windows 98 SE or later.

Free USB port for optional cable links (does not apply to HandKnit).

Screen size at least 800 x 600 pixels.

500 MBytes hard disk space (if installing tutorials). 80 MBytes without tutorials.

Support by email or telephone is included.

Soft Byte Ltd

Quarry Lane,
Nantmawr,
Oswestry
Shropshire,
SY10 9HH,
UK

Tel 01691 828556
Fax 01691 828195
Email info@softbyte.co.uk
Web www.softbyte.co.uk
Education sales:
01244 303050 / ictsolutions@hotmail.com